

SUGGESTED START: Victory Park, West Close Road entrance, BB18 5EN (SD 8785 4732).

DISTANCE: 10.4 km / 6.5 miles

TIME: 4 hrs (plus sightseeing)

TERRAIN: Mainly through fields and farmland with a short section along residential streets. Some fields may be a little boggy after rainfall.

DIFFICULTY: Moderate/Hard

OS MAP: It is advisable to use OS Landranger 103 with this guide.

 2, 65, 67, X43

 Car park at Victory Park (SD 8785 4732)

 Public toilets on Fernlea Avenue, BB18 5DP


 Many - Barnoldswick has a thriving town centre

 Various pubs in Barnoldswick town centre

 Various cafes in Barnoldswick town centre

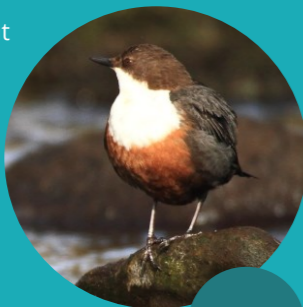
THE RIVERS: **Stock Beck** flows through Barnoldswick before meandering through farmland and joining the Ribble near Gisburn. Stock Beck and other fast-flowing streams in the area enabled the expansion of industry in Barnoldswick with the introduction of water-powered mills.

Historically, Stock Beck has suffered from pollution from the town's industrial activities. Thankfully, tighter regulation of industrial waste has helped to improve the water quality of Stock Beck. Work has been undertaken by Ribble Rivers Trust to further improve the watercourse. A large number of trees have been planted to help with natural flood management and also to provide habitat for riverine wildlife. A weir has been modified on the beck in Victory Park to aid the movement upstream of migratory fish species such as salmon and trout. *To find out more about these projects, see overleaf.*

 **WILDLIFE:** Keep an eye out for herons, dippers and grey wagtails along the water's edge.

Stock Beck is home to brown trout, Atlantic salmon, bullhead, stone loach, minnow, grayling, stickleback and the critically endangered European eel.

Once in the open farmland, keep an eye out for curlews, buzzards and lapwings. Long-tailed tits are occasionally seen around Victory Park. In the evening, the park is home to pipistrelle bats and hedgehogs.



Dipper

WHAT TO EXPECT:

Beginning in Victory Park at the edge of Barnoldswick, this route heads out through farmland towards Bracewell. Curving south to Brogden, the route then follows a short section of the Roman road before returning into Barnoldswick. Expect scenic rural views and peaceful footpaths. Livestock are present in some of the fields on this route, so please keep dogs on a lead. If cattle get too close or become excitable, let the dog off the lead.

LOOK OUT FOR:

1. Barnoldswick has been part of Lancashire since 1774, before which it fell within the West Riding of Yorkshire. The history of the town can be traced back to the Vikings. The settlement is recorded as 'Bernulfesuuic' in the Domesday Book. The name derives from a man called Bernulf who established his 'wick' or settlement here.



Barnoldswick

2. The land for **Victory Park** was bought by Barnoldswick Urban District Council after WWI to commemorate those who lost their lives. After much planning and fundraising, a children's play area was developed in the 1930s. The park was formally opened in May 1953 as part of the celebrations for Queen Elizabeth II's coronation.

3. Rolls Royce have had a site in Barnoldswick since 1943 when they purchased the former Bankfield Mill site to develop the jet engine. The first jet engine designed and built at the site was the B23 (later named the Welland), which powered the Meteor. The B stands for Barnoldswick and was later modified to RB - Rolls Barnoldswick.



Rolls Royce engine

4. The **Leeds Liverpool Canal** traverses through Barnoldswick and it is on the fringes of the town at Greenberfield Locks that it reaches the highest point on its journey, 487 ft/149 m above sea level. The canal improved transport to this previously hard-to-reach area, enabling the transport of raw materials and finished goods.



Leeds Liverpool canal

5. Bracewell - this small hamlet still bears evidence of being a hiding place for King Henry VI during his escape from Yorkists in 1464. King Henry was captured in 1465 and sent to the Tower of London in 1470. King Henry's Parlour, a stone barn, can still be seen today.



Bancroft Mill

7. Valley Gardens was once called Butts Park owing to Butts Beck running through the site. The mill race which flows through the centre of the park served a working mill. In 1989 the Valley Gardens Working Group was formed by local residents to help look after this green space and improve it as an amenity for the town. This Green Flag park is home to chaffinches, goldcrests and dunlocks.

Contains Ordnance Survey data © Crown copyright and database rights 2021. All rights reserved. Environment Agency copyright and database rights 2021.



The Ribble Catchment



FOLLOW US:



This walk has been created by Ribble Rivers Trust as part of a series of circular routes for the Ribble Life Together project. Scan the QR code to find out more or visit www.ribblelifetogether.org. Download the **Ribble Life** app, to accompany this route on Android and iPhone.

- Follow the Countryside Code: consider wildlife and other users
- Carry spare food and drinks
- Take a charged mobile phone, first aid kit, map and compass
- Wear sturdy boots and clothing suitable for forecast conditions

Enjoy safely

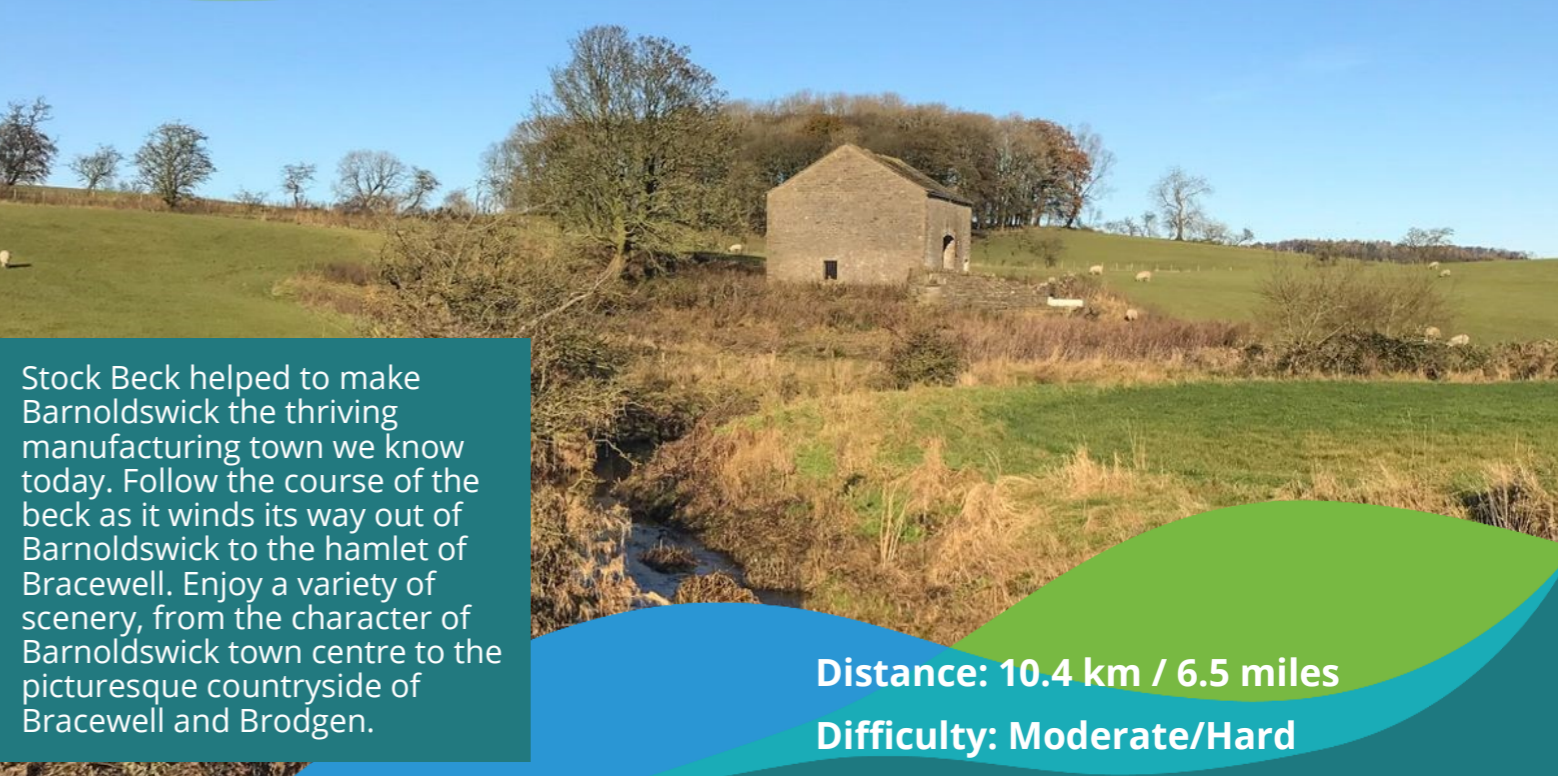
- Barnoldswick Circular (Visit Pendle)
- Beating the Bounds
- Stream and Steam Heritage Trail

Nearby trails

Ribble Life Together is working to create a healthier river system for people and wildlife. The project celebrates the heritage of the rivers, improving access and using the river to inspire and educate. Through practical environmental action, based on science, we aim to leave a positive legacy for future generations.



River Walks Barnoldswick



Stock Beck helped to make Barnoldswick the thriving manufacturing town we know today. Follow the course of the beck as it winds its way out of Barnoldswick to the hamlet of Bracewell. Enjoy a variety of scenery, from the character of Barnoldswick town centre to the picturesque countryside of Bracewell and Brogden.

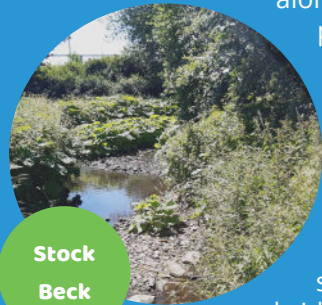
Distance: 10.4 km / 6.5 miles

Difficulty: Moderate/Hard

ROUTE DIRECTIONS

A. To Gilbeber Hill

Park at the car park just inside the gates to Victory Park and follow Stock Beck, down through Victory Park, along the eastern

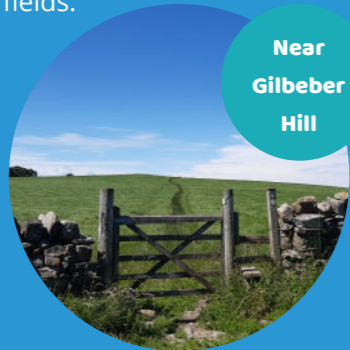


Stock Beck

perimeter. Ignore the first footbridge on your right-hand side and follow the path, turning right after the children's play area and going over the footbridge. Follow the path until you come to a lane. Use the stone squeeze stile next to the bridge, diagonally left across the

lane. Head straight across the field to the small gate on the far side. Continue through the gate to rejoin the beck briefly as it meanders left through the fields.

Cross the substantial footbridge and continue straight up the gentle inclines of Gilbeber Hill. Stay left of the large barn, heading over the stile and across the next field to a marker post. At the post, turn right, heading towards the footbridge roughly 100 m downstream (left) of the outbarn beside the beck.



Near Gilbeber Hill

B. To Bracewell

Cross the bridge and climb steadily to the left of the hedge to a small gate in the stone wall on the right-hand side (look out for the yellow topped post). Head left towards the two properties, take the track between the two houses, coming to a stone stile next to a metal gate. After the stile, follow the grassy track round to the left and descend down to the beck. On a clear day, enjoy views of Weets Hill and Pendle Hill to the south and the Bowland Fells to the north west. Cross the footbridge, where you'll see some of the native trees planted by Ribble Rivers Trust. Continue through this little riverside glade then follow the hedge along the field boundary into the hamlet of Bracewell.

C. Through Bracewell

Cross the road with care. Head right for 25 m, then take the footpath left along the track. Continue through the kissing gate and descend past the house to a stone stile. Climb straight ahead to join the footpath skirting left of the woodland then follow the path running left of the second, smaller stand of trees. Follow the fence for 400 m, then cut across to the stone wall on the right to a stile in the corner of the field. Cross the stile and continue through the gate directly ahead. Continue past the reservoir and through the kissing gate then through another gate.



Stock Beck woodland

D. To Coverdale

Follow the line of large trees over the next field to a farm track. Turn left onto the track and follow it to a house, then turn right along the tarmac track. At the end of the track turn left into Coal Pit Lane, following the Pennine Bridleway for 400 m. At the crossroads, turn left over the cattle grid and onto the track to Coverdale Farm. Continue through the farmyard, then right through another yard and left through a metal gate onto a gravel track into fields and through another metal gate. After the gate, head half left across the field to a small wooden gate (roughly in the direction of the wind turbine). Then half left again to a gate in the corner of the field. Then take the gate on the right and follow the fence on your right to the next gate and continue along the course of the Roman road to Brogden Hall Farm.



Brogden Hall Farm



Views From Brogden

E. Brogden Lane

At the farm gate, ford the stream and turn left onto the lane past the farmhouses. After 200 m, take the footpath on the right running alongside a private driveway. Go through the gate and follow the wall then the hedge for 500 m to a metal gate. Go through the gate and continue ahead on the track, then over a stile and half right across the next field to another stile.

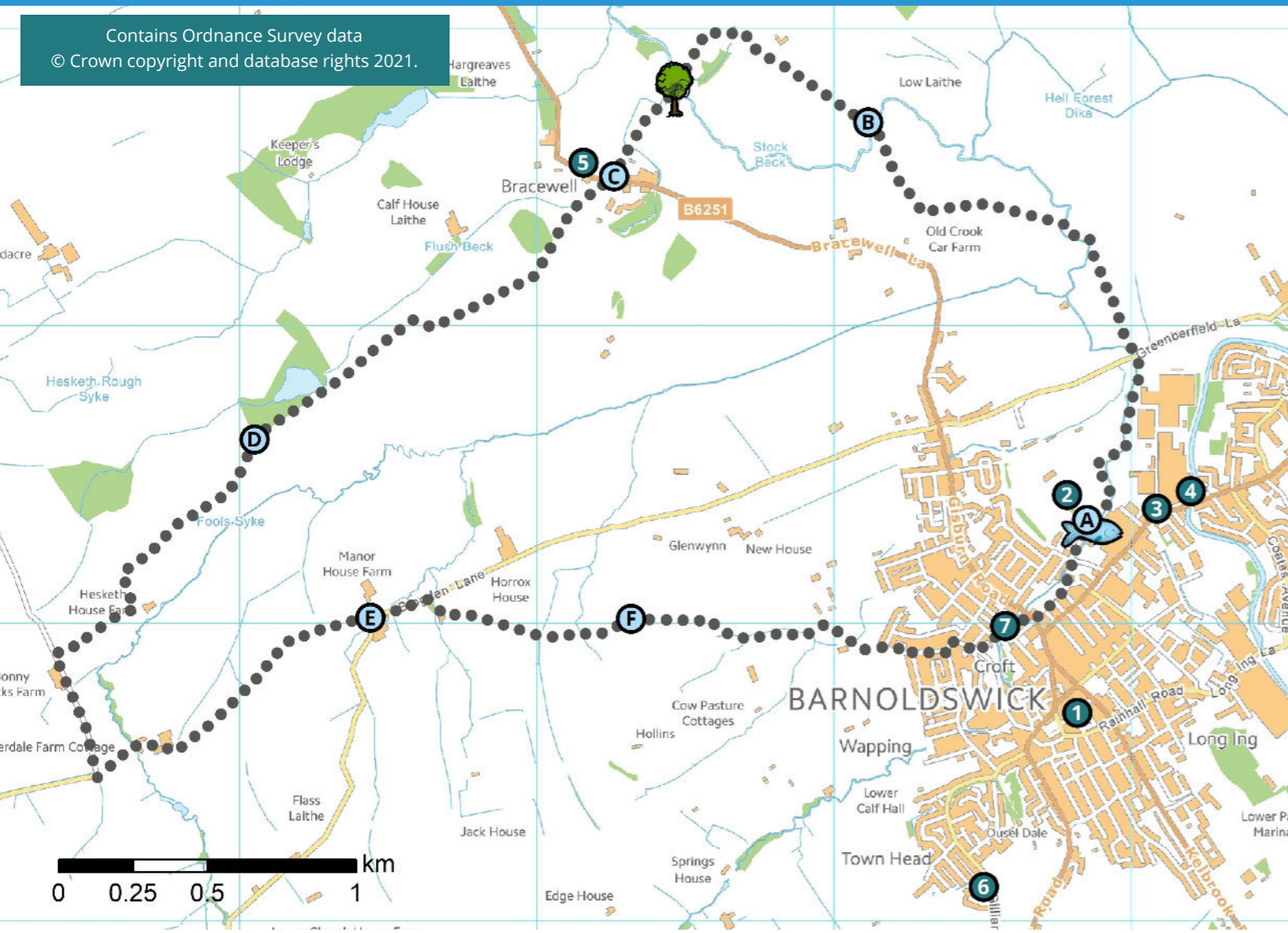
F. Return to Barnoldswick

Once over the stile, head slight right, descending towards Barnoldswick. At the bottom of the hill, go through the gate and continue along the grass path through the copse. Go through the gate beside the pond, continue ahead past the pollarded willows then through another gate. Follow the fence line to the gate ahead. Head uphill into the top right corner of the field and over the stile onto a fenced path between fields. Cross the footbridge and join the track heading to the housing estate. Just before the housing estate, take the path straight ahead, along the right-hand edge of the houses. Follow the path until it comes out onto Rylstone Drive and turn left. At the end of Rylstone Drive turn left and follow the road round the bend and take the first right onto Pennine Way. Then take the third turning on the left, down a small side street on the left-hand side of a grassed common. Follow to the bottom of the hill and continue roughly straight on, onto a footbridge with metal railings. Once in Valley Gardens, bear left on the tarmac track. Come to Gisburn Road and take the small side street diagonally right on the opposite side of Gisburn Road. Follow this road and pass an assortment of garages. Immediately after two grey metal gate posts on your left, take the cobbled track on the left downhill and come out at a tall former corn mill. Take the tarmac path ahead, down the side of the red brick building and emerge opposite the gates to Victory Park.



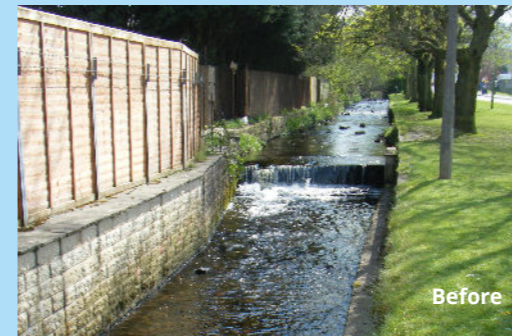
Valley Gardens

Contains Ordnance Survey data
© Crown copyright and database rights 2021.

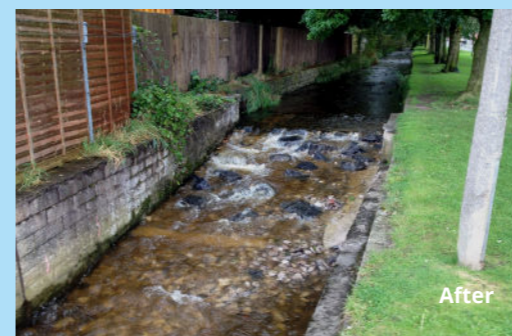


Stock Beck Fish Pass (see point on map)

In 2012 a small weir on Stock Beck was modified by Ribble Rivers Trust. The rock ramp fish pass has improved access to 0.7 km of watercourse upstream for migratory fish species such as salmon and trout. The project was part of wider improvement works along Stock Beck which included the creation of several new woodlands (for more details, see *Stock Beck Woodland*).



Before



After



Stock Beck Woodland (see point on map)

Between 2011 and 2013, roughly 4,000 trees were planted creating 9.4 hectares of new woodland along Stock Beck near Bracewell. The trees perform a number of useful functions for rivers including: reducing erosion by stabilising the bank with their roots, providing shade along the beck, filtering pollutants from the water and slowing the rate of rainfall runoff, helping to reduce flood peaks.



Completed woodland in 2014.

Route guide and content copyright © Ribble Rivers Trust 2021.

Every effort has been made to provide accurate information in this guide. Ribble Rivers Trust cannot take responsibility for any errors. No recommendation is given by inclusion or omission of any establishment.