

**SUGGESTED START:** Car park by Pendle Heritage Centre (SD 8628 3981).

**DISTANCE:** 8.5 km / 5.3 miles


**TIME:** 2 hrs 30 mins (plus sightseeing)

**TERRAIN:** Some fields (a little boggy after rainfall) some roads (mostly quiet or with pavements), lots of well-maintained pathways. Slight incline to Noggarth Hill.

**DIFFICULTY:** Moderate


**OS MAP:** It is advisable to use OS Landranger 103 with this guide.


 2, 65, 67, X43

 Car park by Pendle Heritage Centre BB9 6JD (SD 8628 3981), parking spaces in Roughlee BB9 6NX (SD 8387 3994)

 Pendle Heritage Centre, various pubs and cafés

 Many - Barrowford has a thriving high street


 Barrowford: White Bear Inn, Old Bridge Inn, George and Dragon, Bankers Draft  
Roughlee: Bay Horse Inn

 Barrowford: various  
Roughlee: Noggarth Top Café

**THE RIVERS:** **Pendle Water** runs through the centre of Barrowford and is home to a number of fish species including trout, eels, bullhead and stone loach. Pendle Water begins, as the name would suggest, on Pendle Hill, weaving down through Roughlee and into Barrowford before joining the Calder on the outskirts of Burnley.

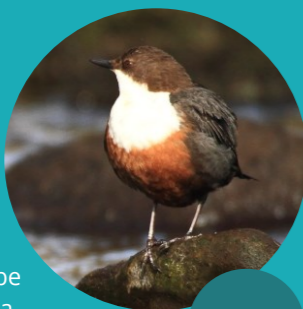
The **River Calder** (thought to translate from Celtic as 'violent stream') begins on the moors above Cliviger, not far from the source of the Yorkshire River Calder. From here, it travels through the wooded Cliviger Gorge and Towneley Park before entering Burnley. This tributary of the River Ribble continues through Padiham and Whalley before meeting the Ribble.

Historically, the area was heavily industrialised and much of the River Calder and its tributaries were altered and impacted by industrial and urban development.

 **WILDLIFE:** Keep an eye out for herons, dippers and kingfishers along the water's edge.

Pendle Water is home to the brown trout and critically endangered European eel, which can sometimes be spotted. Barrowford Park is home to a variety of wildlife including great spotted woodpeckers.

Roughlee falls within the Forest of Pendle, an outlier of the Forest of Bowland Area of Outstanding Natural Beauty (AONB) and is a good location for wildlife spotting.



**Dipper**

**WHAT TO EXPECT:**

Beginning in Barrowford, the walk heads out past Higherford Mill towards Water Meetings. The route then crosses farmland towards Blacko Foot, before joining the road into Roughlee. After leaving Roughlee, the route then takes a slight incline up to Noggarth Top, providing excellent views of Pendle Hill on the way. Heading downhill through farmland, we return into Barrowford and through Barrowford Memorial Park before continuing past Pendle Heritage Centre to the car park. Livestock are present in some of the fields on this route, so please keep dogs on a lead. If cattle get too close or become excitable, let the dog off the lead.

 **LOOK OUT FOR:**



**Packhorse Bridge**

1. The **packhorse bridge** on Foreside near Higherford Mill is thought to date back to the 1580s. The original bridge wouldn't have had parapets, these were added in the early 1800s after a near fatal accident. The bridge used to have a bell on a rope attached which would warn local residents of a flood as the water disturbed the rope and rang the bell.



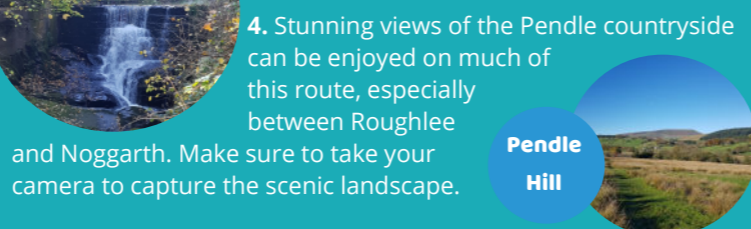
**Alice Nutter**

2. To commemorate the 400th anniversary of the infamous Pendle Witch Trials, a **statue of Alice Nutter** was unveiled in 2012 in Roughlee, the village she was born in. The statue was designed by artist and architectural steel engineer David Palmer, a resident of Roughlee. Alice remained silent throughout her trial except to plea not guilty to the charge of murder. She was hanged along with 9 others at Lancaster in August 1612.



**Weir & Waterfall**

3. Also in Roughlee are an impressive **weir and waterfall**. The weir was built to power the village's cotton mill (Judson's Mill) which was demolished in 1961.



**Pendle Hill**

4. Stunning views of the Pendle countryside can be enjoyed on much of this route, especially between Roughlee and Noggarth. Make sure to take your camera to capture the scenic landscape.



**Clarion House**

5. Not visible from the route, but near Noggarth Top café, is the **Clarion House**, built by Nelson Independent Labour Party in 1912 and funded with a £350 loan from the Nelson Weavers Association. There would once have been many Clarion Houses in the North West, London and Scotland, however, this is now the last one remaining. The Clarion House is still open every Sunday 10.30am-4pm, serving refreshments and encouraging conversation.



**Fish pass on Barrowford Weir**

6. It is thought that **Barrowford Weir** has existed since the 16th century and was originally built to power Old Mill, which was situated on what is now Barrowford Memorial Park. In 2011, a fish pass was created on the weir by Ribble Rivers Trust to improve access on Pendle Water for migratory fish species moving upstream (see overleaf for

further information on the fish pass).



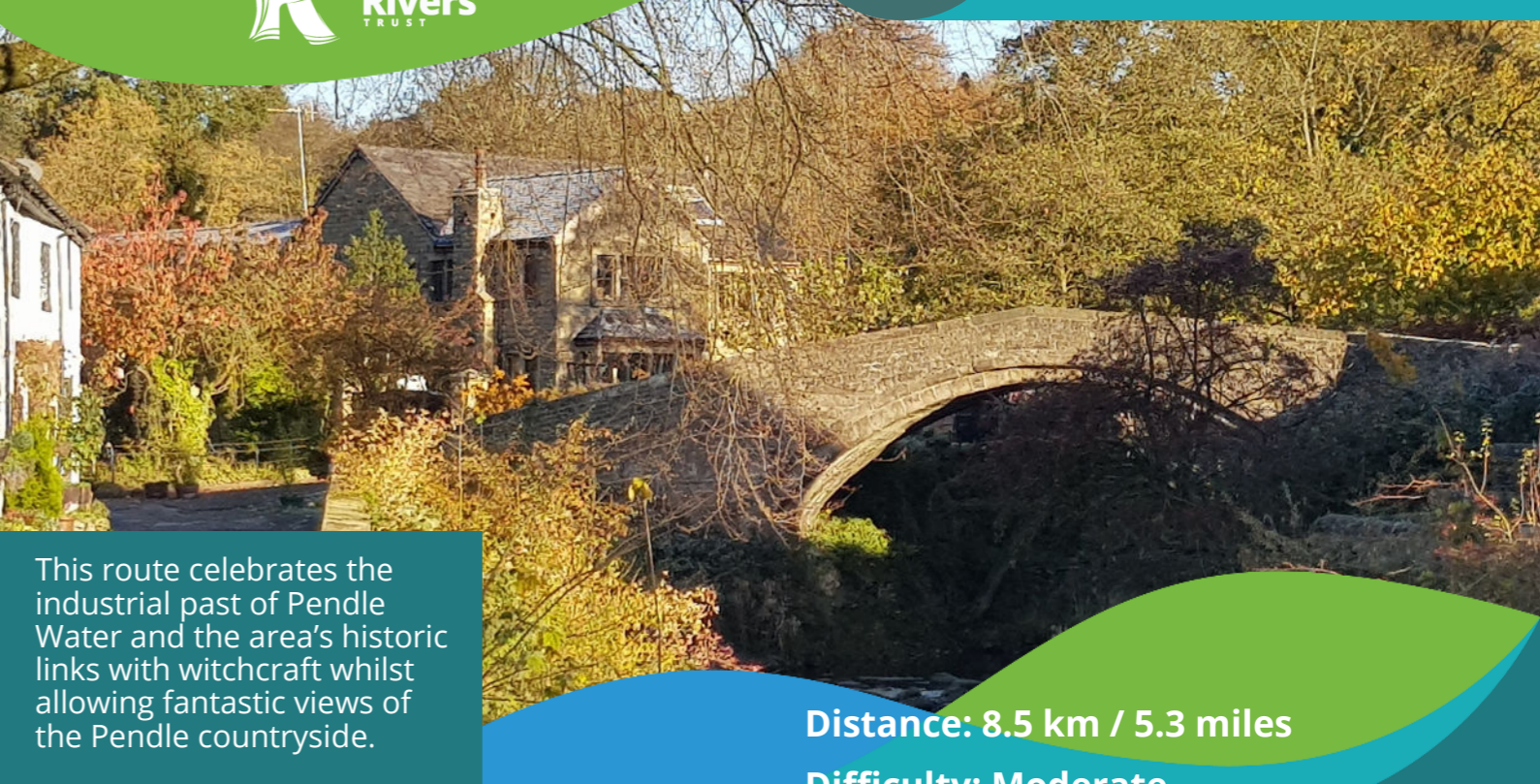
**The Ribble Catchment**



**FOLLOW US:**



**River Walks Barrowford**



This route celebrates the industrial past of Pendle Water and the area's historic links with witchcraft whilst allowing fantastic views of the Pendle countryside.

**Distance: 8.5 km / 5.3 miles**

**Difficulty: Moderate**



This walk has been created by Ribble Rivers Trust as part of a series of circular routes for the Ribble Life Together project. Scan the QR code to find out more or visit [www.ribblelifetogether.org](http://www.ribblelifetogether.org). Download the **Ribble Life** app, to accompany this route on Android and iPhone.

- Follow the Countryside Code: consider wildlife and other users
- Carry spare food and drinks
- Take a charged mobile phone, first aid kit, map and compass
- Wear sturdy boots and clothing suitable for forecast conditions

**Enjoy safely**

- Ribble Rivers Trust River Walks: Calder and Brun
- Pendle Way
- Barrowford Heritage Trail & Walking with Witches Trail

**Nearby trails**

Ribble Life Together is working to create a healthier river system by 2020 for people and wildlife. The project celebrates the heritage of the rivers, improving access and using the river to inspire and educate. Through practical environmental action, based on science, we aim to leave a positive legacy for future generations.

**Thank you!**

To the National Lottery Heritage Fund for funding the project and to Pendle Heritage Centre, Andrea Smith, I & J Blades, Barrowford Parish Council, Friends of Barrowford Memorial Park, Pendle Borough Council and Roughlee Parish Council for support in developing and trialling the route.

Photography: I. Lord, R. Harrison-Reader & H. Smith.

Contains Ordnance Survey data © Crown copyright and database right 2019. All rights reserved. Environment Agency copyright and database right 2019.

# ROUTE DIRECTIONS

## A. Pendle Heritage Centre

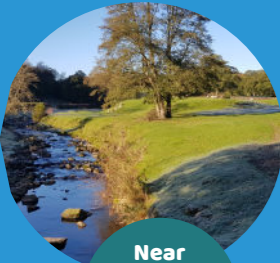
Starting at the car park by the Pendle Heritage Centre, go on to the main road and over the bridge towards the George and Dragon pub (look out for the Toll House at the junction). Turn right here, following the road away from the centre of Barrowford. Bear left just before the next bridge, and follow the road which runs alongside the river. Follow this until a path appears on your right, running parallel with the road and closer to the river. Take this path and continue through both a kissing gate and a small field gate, until you reach another bridge.



Toll House

## B. Water Meetings

At the bridge follow the Pendle Way markers, going over the bridge and then turning left through a small field gate into a field alongside the river. Walk up the river and past the confluence of Pendle Water and Blacko Water to a bridge further up. Go over the bridge and bear right towards a small field gate at the end of the field.



Near Water Meetings

## C. Roughlee

Follow the road through Roughlee, past the statue of Alice Nutter, the weir, the waterfall and the car park alongside the road. Go over the bridge and turn immediately to your left, following the finger post. Continue along this path, going over a small bridge and up some steps. At a fork in the path, take the right-hand path and follow it, heading left, uphill to the top left corner of the field. Go through the squeeze stile with a gate, then follow the waymarker to another stile like the one before. Continue to a kissing gate and then bear left, with the line of trees on your left-hand side. (Image courtesy of Iain Lord)

Roughlee Hall



## D. Ancient Footpath

At a fork in the path, bear right and head to the end of the field, towards the squeeze stile opposite a small square building on the edge of the reservoir. After the squeeze stile turn immediately right onto the track and follow it around to the right, following the footpath sign. Note Pendle Hill on your right.

Follow the track for approximately 400 metres until a small wooden gate straight ahead, with a yellow waymarker sign, as the track again bears slightly right. Pass through the gate keeping the wall to your left. Continue straight until you reach another small field gate next to Noggarth Top Café. Immediately turn left and go over a stone stile into a large field. Head diagonally left (11 o'clock direction), going around the right-hand edge of the area marked out with white-topped wooden posts, then start to bear left towards the bottom left-hand corner of the field. Look out for a metal kissing gate next to a metal field gate. (Image courtesy of Iain Lord)



Noggarth Top Cafe

## E. Back to Barrowford

Going through the kissing gate, head diagonally left towards the pylon to another kissing gate. After this, go straight on to a small field gate and then follow the waymarker down the field, keeping the line of trees on your left-hand side. Go through another small field gate/squeeze stile and follow a waymarker to the bottom of the field where you go through a kissing gate to get onto a road. Turn left here and follow the road until it joins the main road running through Barrowford.



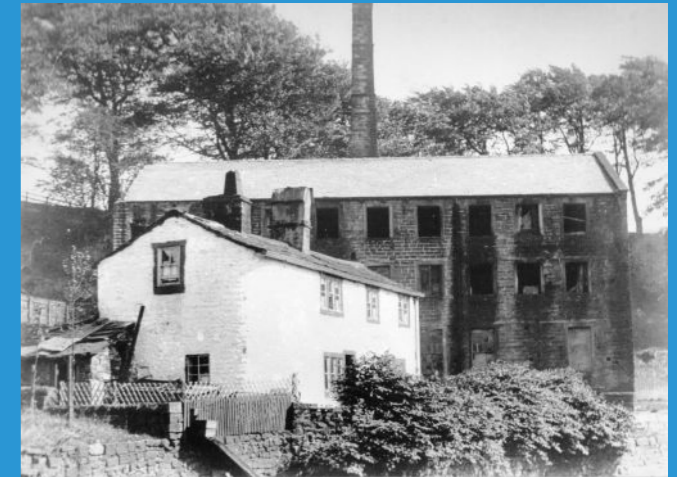
Lamb Club

## F. Through the park

Turn left down Gisburn Road, towards The White Bear pub. Opposite The White Bear turn right over a bridge leading into Barrowford Memorial Park. Turn left onto the path and walk past the weir, fish pass (see below for more information) and Pendle Heritage Centre to reach the road. Cross the road to get back to the car park where the walk began.



Barrowford Memorial Park



Image, courtesy of Iain Lord, shows the corn mill which was located in the area that is now Barrowford Memorial Park.



## Barrowford Weir (see point 6 on map)

The fish pass on Barrowford weir was installed by Ribble Rivers Trust in 2011. The modification to the weir was implemented to ease the movement of wildlife upstream. The design of the fish pass is commonly described as a 'fish ladder'. Baffles (metal plates to direct and restrain the flow of water) on the base and sides help to keep water flowing at specific speeds, aiding the movement of fish upstream.

Delivered through the River Improvement Fund, the fish pass was part of a larger project on Pendle Water which also included modifications to two smaller weirs downstream. The work on these three weirs has improved access upstream for a variety of fish species. The projects at Barrowford have opened up a further 18km of in-river habitat which had been inaccessible for many years.

Several species of fish are frequently found in Pendle Water including: trout, eels, bullhead and stoneloach. Migratory fish species such as salmon and trout swim upstream to spawn, and structures such as weirs can prevent access, separating pockets of habitat.



Baffles inside the fish pass during construction.



Barrowford weir before alterations.



The completed fish pass in July 2011 including viewing platform next to Pendle Heritage Centre.

Route guide and content copyright © Ribble Rivers Trust 2019.

Every effort has been made to provide accurate information in this guide. Ribble Rivers Trust cannot take responsibility for any errors. No recommendation is given by inclusion or omission of any establishment.