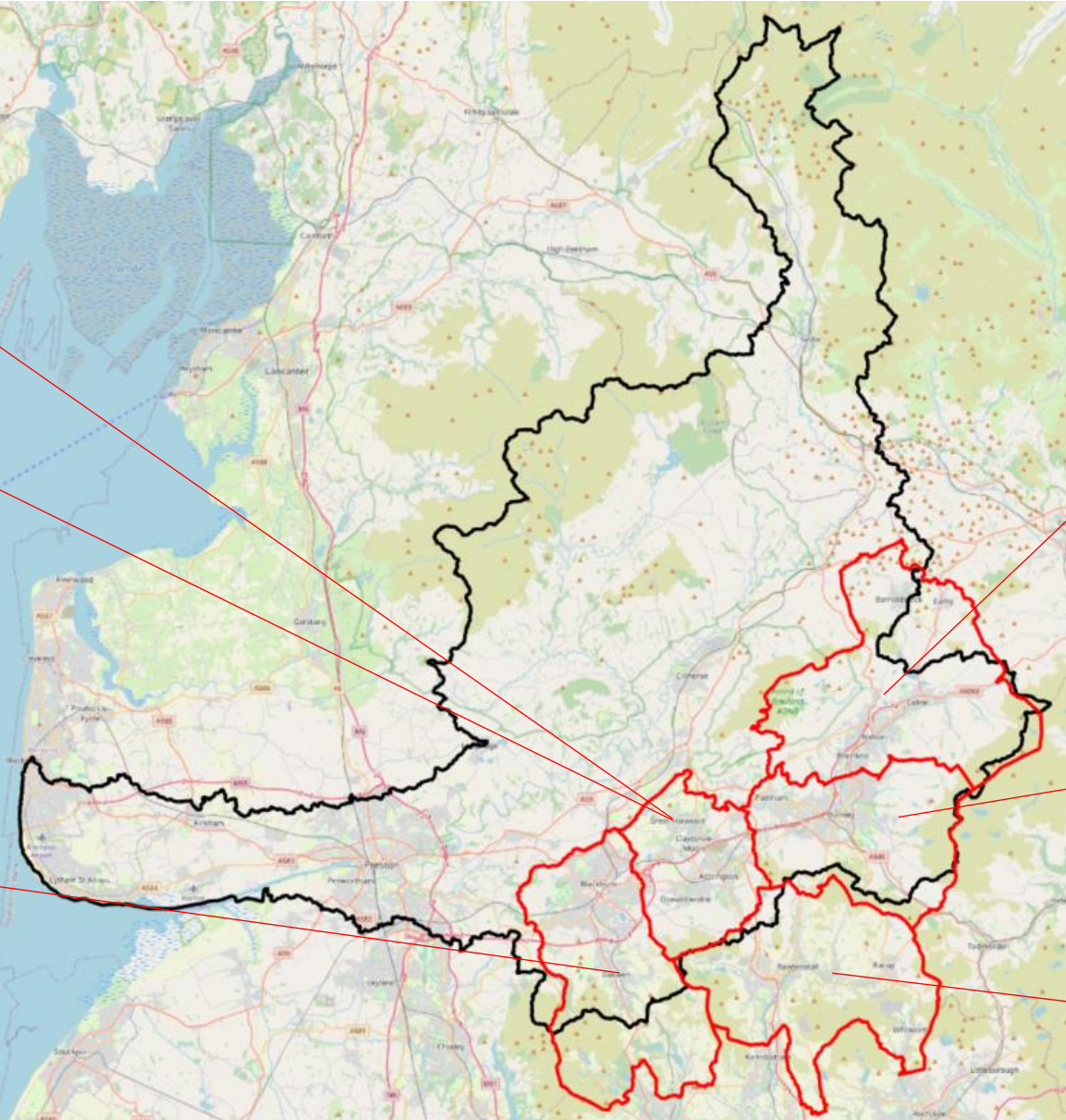


# Pennine Lancashire Treescapes (PLanT) project



# A partnership project between:



# Local Authority Treescapes Fund

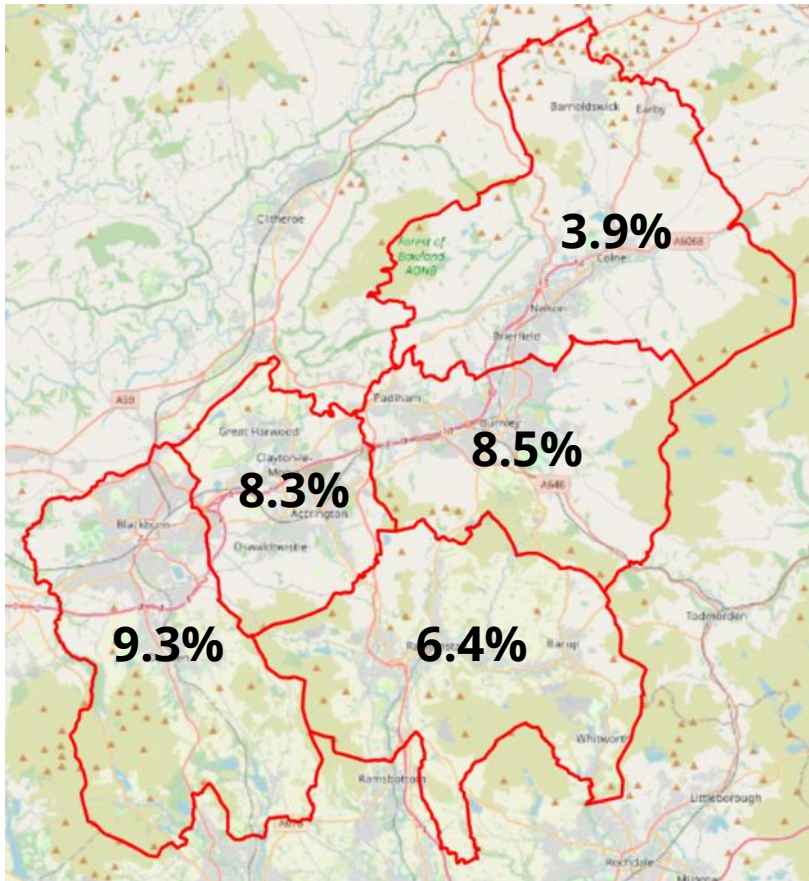


**Forestry Commission**  
England

Funding to  
establish  
trees  
outside of  
woodlands

# Why?

Woodland coverage less than national average (13%)



Around 300ha have been lost since the 1800s due to:

High levels of:

- Urban expansion
- Ash dieback, Dutch Elm disease and other pests/diseases
- Felling of large and over mature trees for safety reasons

Low levels of:

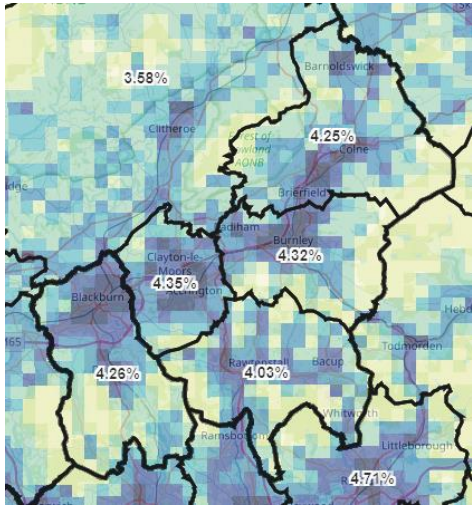
- Natural regeneration, due to:
  - Suppression by livestock grazing
  - A lack of management
  - And/or a lack of local seed sources.

# Why?

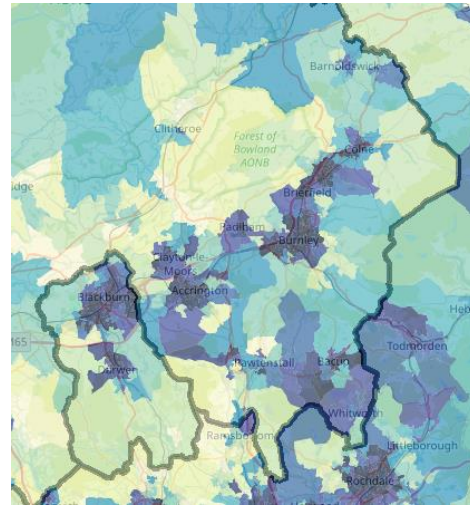
Darker the blue = greater the problem

High levels of:

Low levels of:



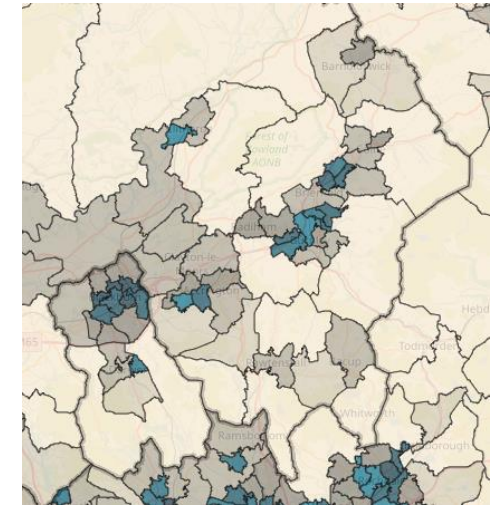
PM2.5 emissions & associated deaths



Deprivation

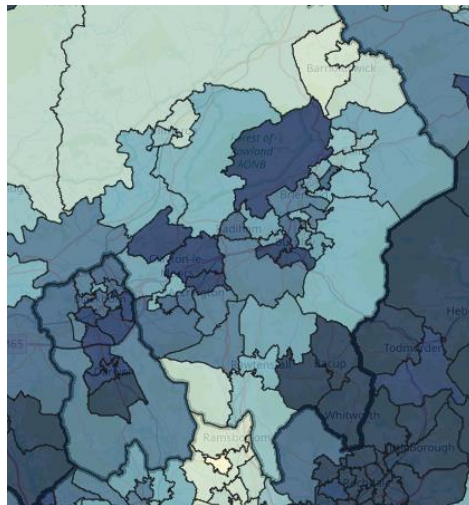


Obesity, inactivity & related illnesses

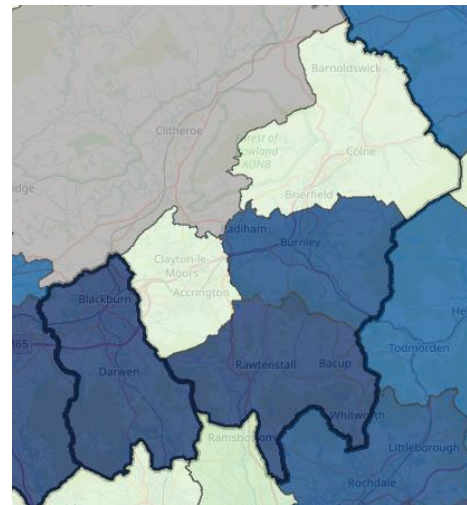


Publicly accessible green/blue space per 1000 population

Adult depression



Children who are inactive outdoors



**Involve local people in planting trees in these areas!**

Th

A



Forestry Commission

## Local Authority Treescapes Fund

those areas, by creating and improving access to high quality greenspaces, and by involving the local communities in this process. The evidence predicts that:

- **85%** of sites will contribute to habitat creation and woodland connectivity across Lancashire, in locations where it will provide the greatest benefits.
- **41%** will improve in-river habitat and water quality and provide associated biodiversity benefits through shading over rivers and reducing diffuse pollution in areas that are failing based on their Water Framework Directive chemical status, and that are upstream of St Annes, Blackpool and Southport Bathing Waters and the Ribble & Alt Estuaries Ramsar, SSSI and SPA.
- **83%** will provide Natural Flood Management in catchments upstream of previously flooded communities, to communities that are particularly vulnerable to flooding, and for rivers that receive high levels of water after rainfall.
- **100%** will help to reduce particulate air pollution concentrations in areas with high emissions and attributable deaths
- **42%** will improve the quality of public greenspace available in areas that have less than the recommended area of accessible green/blue space per 1000 population
- **85%** will improve the amount of high quality public greenspace and provide opportunities to take part in outdoor physical activity to plant trees, in areas that have high levels of obesity, inactivity and associated illnesses, and/or high levels of depression.

# Public consultation and volunteer involvement

Tool (external site)

ulated temperature

odata  
-575  
75-775  
75-975  
75-1200  
200-1600  
600-2000  
000-2500  
500-3500



# Funding bid successful!



**£158,901**  
LATF  
funding

+



**£11,000** towards  
the cost of fruit  
trees

+

**£75,216 of match  
funds**, provided  
through  
volunteer time  
and council/RRT  
contributions

**Great value for money!**

PLanT received just **3.6% of the funding** distributed in Round 1 of LATF, but **15% of the trees** being funded

# The project

Plant **39,440 trees\*** at **135 sites**, totalling **~31.2ha** of new non-woodland trees

- **95 council owned sites**

- Publicly accessible or visible
- Parks, recreational areas, community gardens, allotments, cemeteries
- **Led by councils**

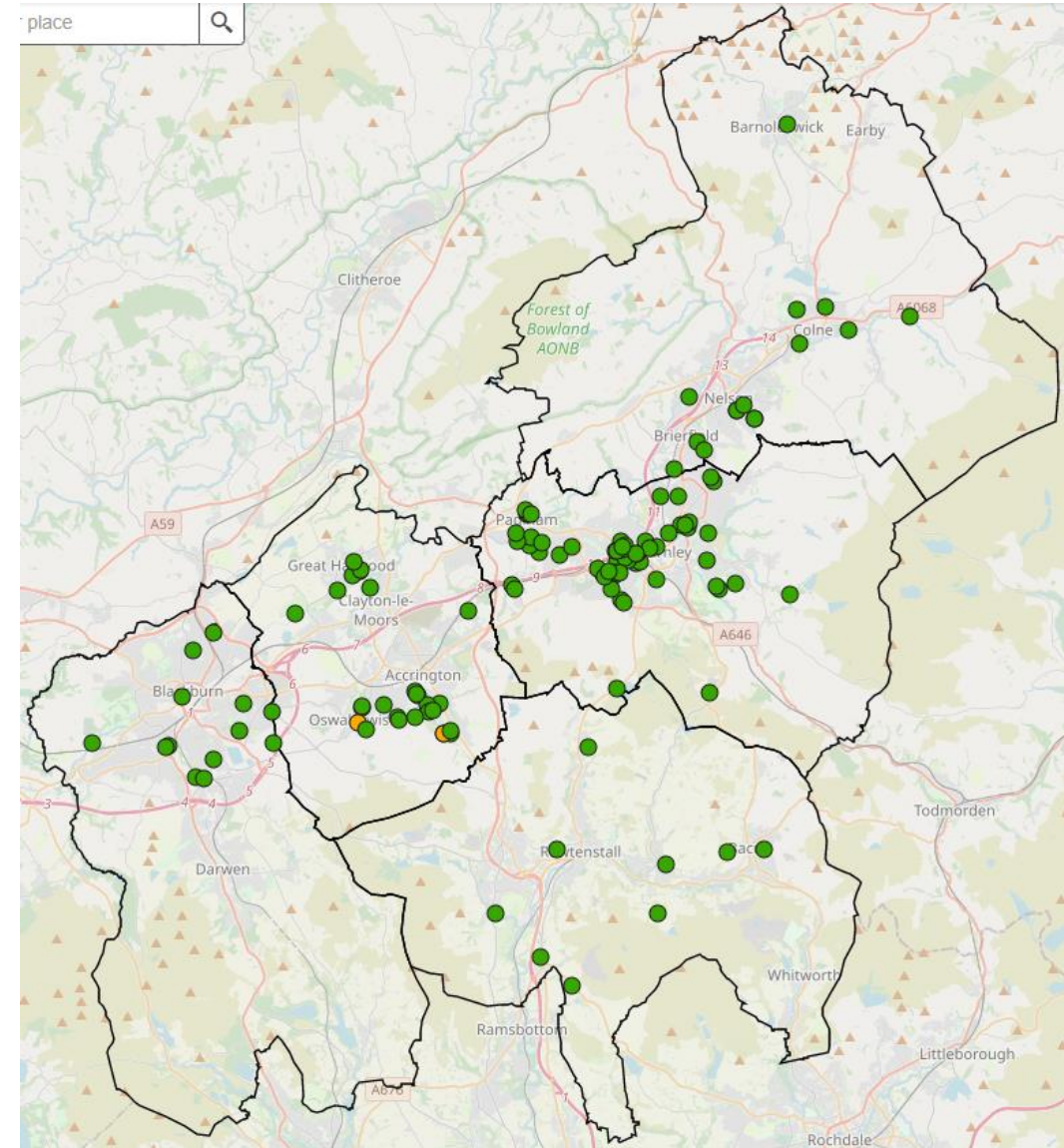
- **40 schools**

- **Led by RRT**, with help from Prosects Foundation in Hyndburn

\*Including **900 fruit trees**

Encourage natural recolonisation at **2 sites** in Hyndburn

**Extensive public consultation and community / school involvement**





# Schools

Aim: Plant **4,000** trees in **40** school grounds

- 3,500 native trees
- 500 fruit trees

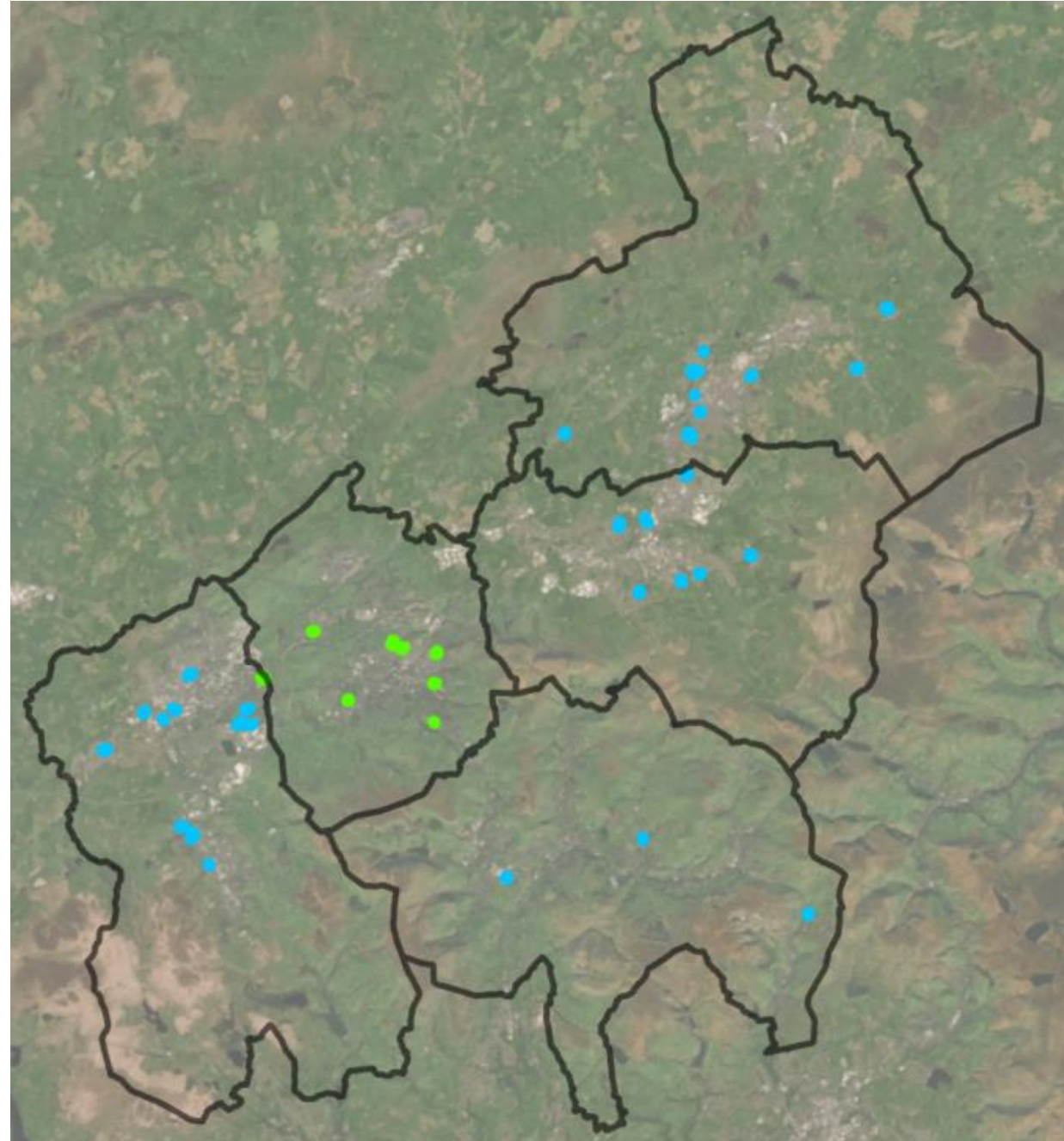
Create and deliver educational games relating to:

- Why trees are important
- What trees need to survive

Help pupils to plant the trees

RRT to deliver in Blackburn with Darwen, Burnley, Pendle & Rossendale (30 schools)

Prospects Foundation to deliver in Hyndburn (10 schools)



# Schools: consultation visits & planting plans

Penine Lancashire Treescapes (Plant) project

School: \_\_\_\_\_ District: \_\_\_\_\_

Name: \_\_\_\_\_ Position: \_\_\_\_\_  
 Email: \_\_\_\_\_ Phone: \_\_\_\_\_

CONSULTATION (1 staff day available per school)

**PLANTING AREA**

Area identified (tick when identified)  Area (ha): \_\_\_\_\_  
 Approx. area trees on this? Please make a note of wet areas of ground and where woodland or fruit trees would be desired.  Area (ha): \_\_\_\_\_

Details of access route for tree planting day:

**TREES** (School preferences re. tree numbers & types cannot be guaranteed, but we will meet them as best we can)

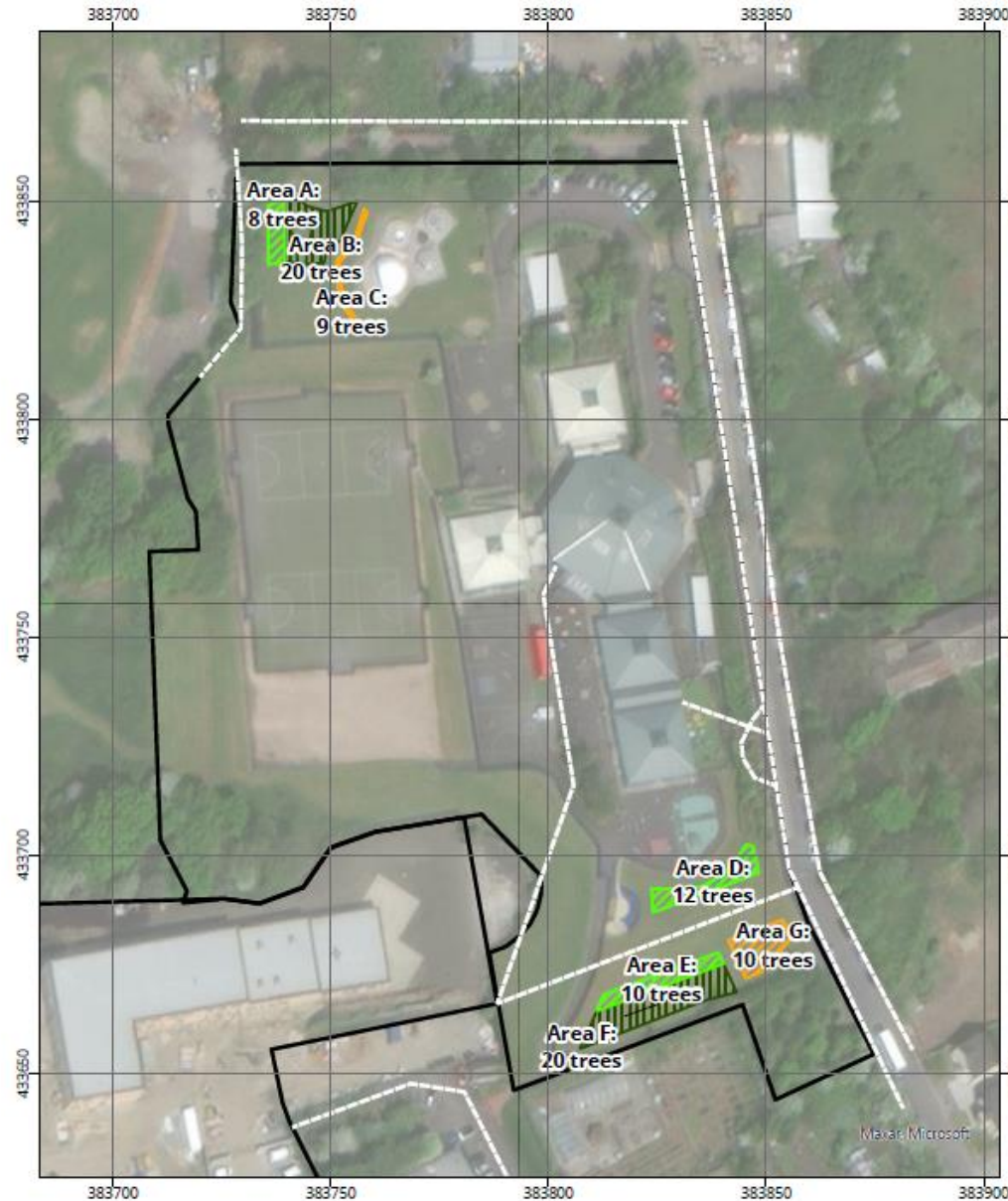
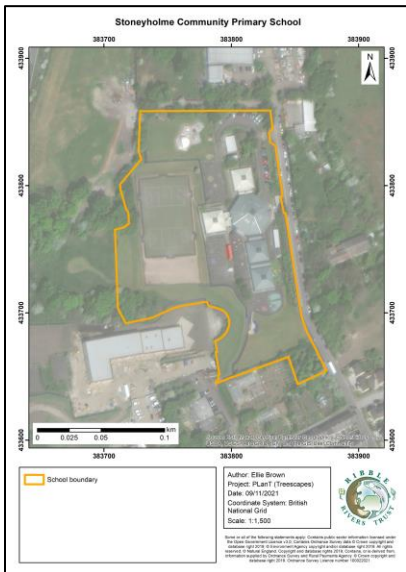
Native tree species present in the surrounding area:	Native woodland species protection (a wooden fence and biodegradable guard)?	Yes / No	Fruit trees?	Yes / No
Preferred number of trees: (see how many classes to take part)	How many children to take part? which age group(s)?		Which of these types of fruit trees would you be happy to have?	Apple <input type="checkbox"/> Damsun <input type="checkbox"/>

**TREE PLANTING SESSION** (10 staff days available per school)

Would you like the tree planting session as part of a half-day education session re. trees & rivers?  Yes /  No

If the school is planting a lot of trees, a good number of which are fruit trees, would they be happy for the children (trees for class) who are specifically funding fruit trees to come and visit during the tree planting day?  Yes /  No

+ Utility searches → +



Stonyholme Community Primary School

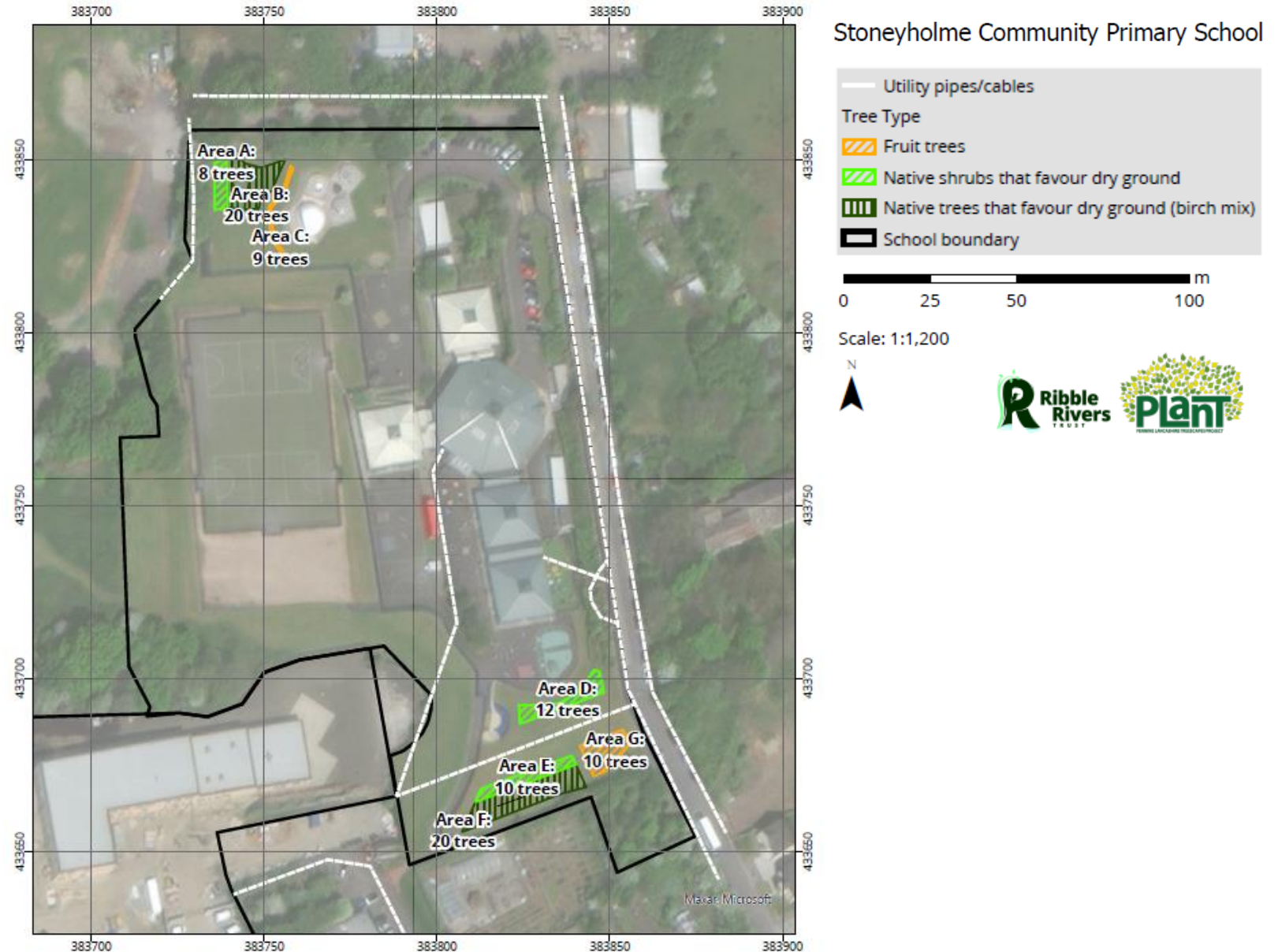


# Schools: consultation visits & planting plans

## Considerations:

- School requirements
- Space available
- Ground conditions (wet vs dry)
- Proximity to features with potential to be impacted by trees (utilities, buildings, roads, paths, playgrounds)
- Size of trees when fully grown and their water requirements
- The species mix available

To ensure a fair and suitable species mix







# Adapted session: Newfield Primary School



# Fruit trees in planters

For **4x schools** that did not have grass to plant trees in  
Utilised underspend on fruit trees



*Our new trees are called Tallulah, Coco and Hermione!*

*School Parliament planting trees with Prospects*

*Our trees are in the KS2 playground*



# Outputs & outcomes

- **40** schools involved in designing their bespoke planting plans
- **2+** educational games created
- **3202 native trees** planted
- **251 fruit trees** planted
- Across **40 school grounds**
- Involving **1378 children**  
...and **131 adults**
- Guidance documents re. looking after their trees

**All in just 5½ months!**





# Outputs & outcomes

“This has been my best day at school ever”

“I love planting trees!” (this was their first time planting trees)

“Can we plant trees every Friday??”

“This has been an amazing experience for the children. Most of them barely leave the estate so it has been great to get them outside and doing something positive for the environment”.

“A massive thank you for yesterday! The amount of trees you have provided us with is amazing and it was a joy to watch the children plant them. There has definitely been a buzz around school and also in the local area too. The staff were amazing, interesting and helpful. The children were so independent in what they were doing and this couldn't have happened without your equipment and knowledge! It is such a worthwhile project and we are happy to be a part of it.”

“A huge thank you to you and your team for today. The children had so much fun and it was such a valuable experience for them.”

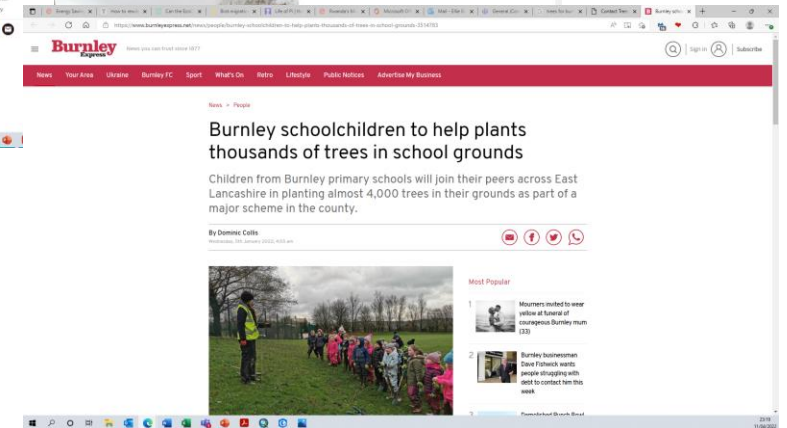
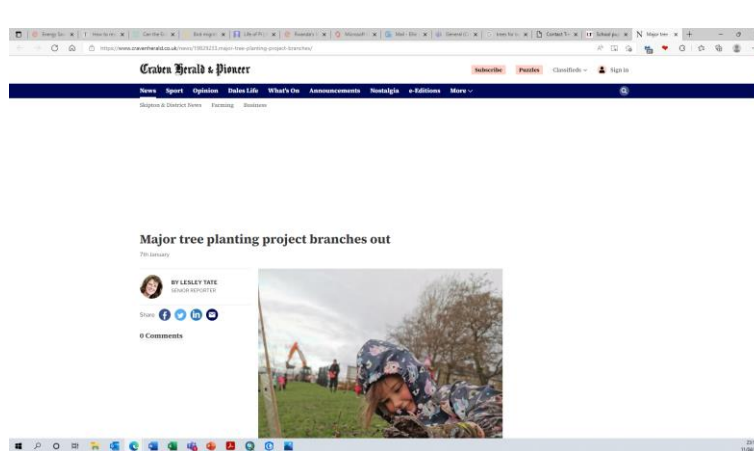
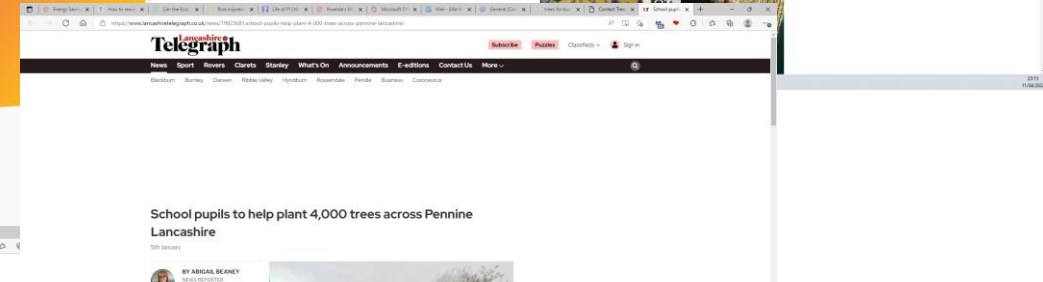
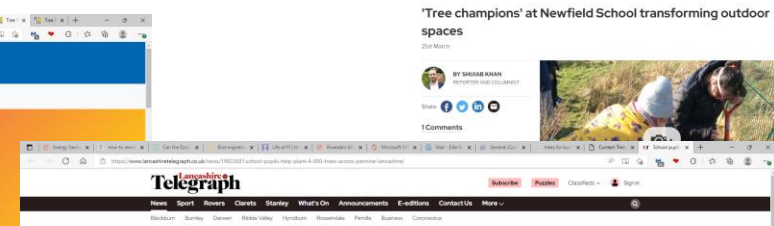
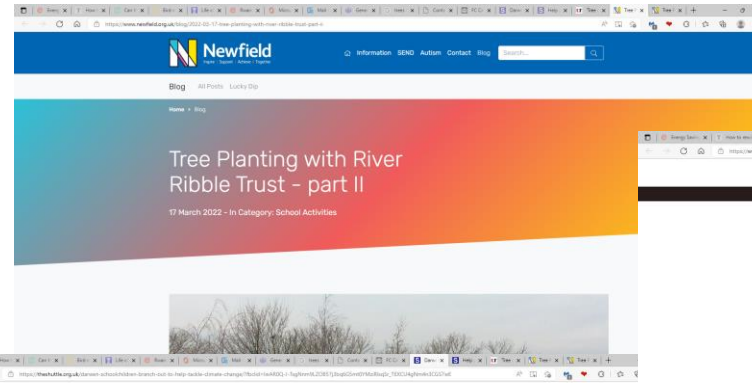
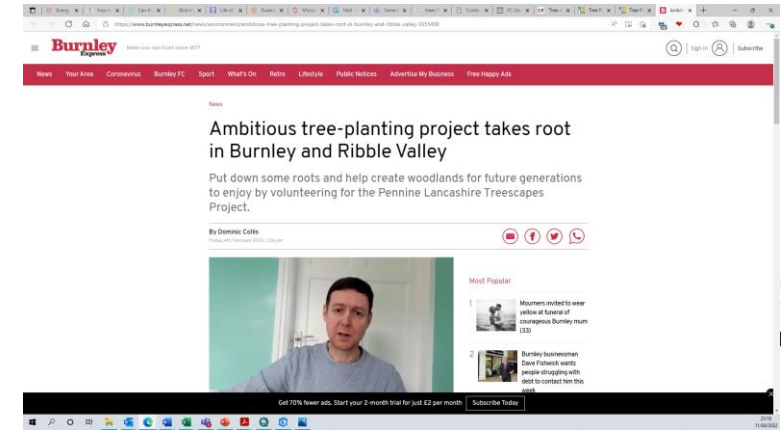
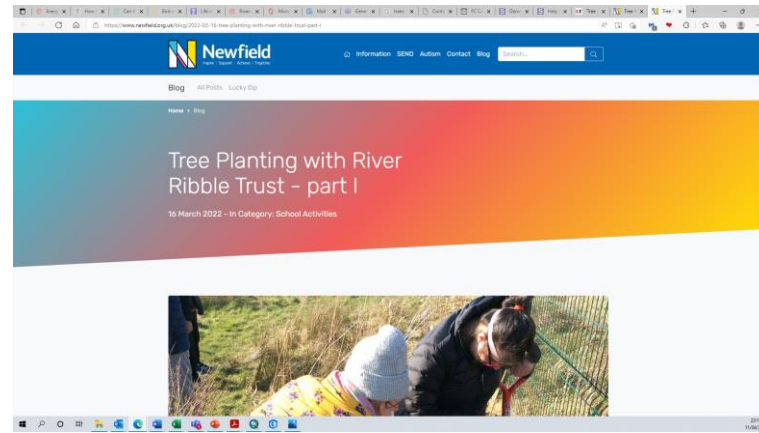
“It was brilliant, the children loved it! “



# A lot of PR!

**BBC**  
RADIO  
LANCASHIRE

**BBC**  
SOUNDS



# Challenges

During the application, we had to state a month-by-month plan for how we would deliver the project, from August-March.

2.5 month delay by the Forestry Commission:

= Cut delivery time down by 1/3, from 8 months to 5.5 months

= Loss of public consultation time

= Some of the original schools sourced trees elsewhere and so dropped out – had to recruit alternative schools

= Native tree supplies exhausted

- Only managed to get trees (with a modified species mix thanks to great working relationship with Thorpe Trees)

= Impossible to get 900 fruit trees of varieties that survive in harsher northern climates

- We got 500. Funder agreed we could supplement with 400 crab apple trees



# Challenges / Lessons Learned

RRT were the driving force behind a lot of the project:

- Wrote the bid
- Created the budgets
- Tendered for the native trees
- Researched and sourced fruit trees (steep learning curve!)
- Delivered tree planting training sessions for the councils
- Created consultation materials
- Created all guidance documents and educational resources

...but Blackburn with Darwen Council were the named Lead Delivery Partner.

Avoid a similar situation occurring again!

Unavoidable for this project, but... Carry out consultation visits and order the tree mix required – don't buy your trees then make them fit in the spaces available.

# Positives

- Rebooted the East Lancashire Woodlands partnership from early 2000s
- Proved how partnership working can add a lot of value to a project
- Good use of evidence to show the need for a project
- Another great example of the RRT team pulling together, and using our individual skill sets to get something done
- Able to adapt the project to involve schools that, otherwise, could not have taken part
- Reached new schools that we haven't worked with before
  - Many keen to work with us again!



# Our project used as THE case study for Round 2 of the LATF funding



## Local Authority Treescapes Fund case study: Pennine Lancashire

This year, the local authorities and non-governmental organisations (NGOs) of the Pennine Lancashire districts re-established partnerships from 15 years ago to plant 40,000 trees.



### Partners within the bid

- Blackburn with Darwen Borough Council
- Burnley Borough Council
- Hyndburn Borough Council
- Pendle Borough Council
- Rossendale Borough Council
- Ribble Rivers Trust
- Trees for Burnley
- Prospects Foundation
- Blackburn with Darwen Food Resilience Alliance
- Blackburn with Darwen CVS

### The challenge

Authorities across Pennine Lancashire are encouraging people to plant trees to increase levels of outdoor activity among children, improve mental health among adults, and help deal with the high levels of obesity found in some areas. This tree planting has the added benefit of improving publicly accessible green spaces.

### Size of land

The group are planting 39,850 trees across 135 sites across Pennine Lancashire, covering 31.2 hectares. This involves 95 council-owned sites and community spaces, and 40 schools.

### Grant used

The Local Authority Treescapes Fund (LATF) is a grant scheme for partnerships formed by local authorities (LAs), to drive an increase in non-woodland tree planting across our landscapes, in parklands, riparian zones, urban areas, beside roads and footpaths, small linear woodlands, copses, and shelterbelts.



### Species

- 900 fruit trees (499 apple & damson trees, 401 crab apple trees)
- 5,825 oak
- 3,900 alder
- 3,900 willow
- 7,800 silver birch
- 5,825 hawthorn
- 3,900 hazel
- 7,800 others (including 2,975 bird cherry, 975 wild cherry, 2,700 rowan, 400 hornbeam & 750 field maples).

### The solution: re-establishing partnerships across Lancashire to bring trees to local communities

This group made their LATF bid work through partnership and innovation, harnessing each partner's individual strengths, and distributing the benefit across all. When approached by the Ribble Rivers Trust, who buy tens of thousands of trees every year, nurseries went out of their way to supply 40,000 trees. Following negotiations, Burnley District Council utilised their established tree planting procurement processes to purchase, then care for, all trees for the group bid – getting good value bulk purchases done quickly.

Ellie Brown, of Ribble Rivers Trust, highlighted how the partnership approach introduced by LATF benefited all: "Different partners have brought different things to the table – sharing the knowledge, experience, and relationships really worked."

Gwen Kinloch, of Blackburn with Darwen Borough Council, felt the same: "From my perspective it [LATF] did trigger something. It perhaps wouldn't have happened – and wouldn't have happened as quickly – had the [LATF] grant not been available. It is helping to inspire our next generations and start some really meaningful conversations."

Anne Hourican, of Hyndburn Borough Council, shared similar thoughts: "This revival of the joint working between the districts, the two main environmental charities, and local community organisations 'oo... We see this as the beginning of something'."

### Objectives

- **Generate and enhance green spaces** in 40 schools and 95 community spaces, including new 'urban micro-woodlands' and a site adjacent to a new health centre.
- **Using innovation and experimentation** for natural woodland regeneration in two Hyndburn sites.
- **Partnership working** between local authorities, NGOs, schools, a healthcare site, and community groups to maximise the benefits of knowledge and experience exchange for all partners.
- **Equipping children and adult volunteers** who are new to tree planting with knowledge of how to plant and care for trees, providing outdoor exercise in the form of tree planting, and the health benefits which come with it.



Photo credit: Ribble Rivers Trust. LATF school planting in Pennine Lancashire.

### Community engagement: Schools and the NHS

LATF enabled Ribble Rivers Trust and Prospects Foundation to massively scale up their school planting this winter – from a few schools to 40. These schools helped design their bespoke planting plans, starting with site surveys with a teacher, the forest schools lead, or a child-led environment group. Through innovation from the Ribble Rivers Trust, and LATF funding, four schools with concrete school grounds planted trees in wooden planters – creating green space which had not existed before.

Following educational games about the importance and needs of trees, all planting was done by children. Some schools sat in areas with low levels

of exercise among children, particularly outdoors. By planting trees, the children accessed much needed outdoor activity, and took stewardship of their school environment. Native tree species were available, including apple and damson, and schools who opted for these planned to deliver lessons on growing food and cooking with the produce.

Hyndburn Borough Council also used LATF funds to engage the healthcare community. One new planting site neighbours an NHS healthcare centre, and the direct contact with the practices will likely lead to tailored health-related activities for the patients and NHS staff.



Gwen Kinloch and Andy Warton planting trees with LATF

### The benefits and innovation of the planting

This year, partners have said LATF allowed them to reach people who haven't volunteered before from the local community, including 72 new volunteers across four events in Rossendale alone. With various reasons for joining in – health, a love of trees, or the climate emergency – volunteers felt connected to the trees; keen to revisit the site to exercise and care for the growing saplings. Gwen Kinloch of Blackburn with Darwen Borough Council pointed out the benefit this feeling of ownership has in the success of sites like this "when people feel that connection, [the trees] will be looked after."

In two sites in Hyndburn, volunteers are providing a small helping hand to nature. A recent ecology survey commissioned by Hyndburn Council recommended natural colonisation for two sites. One site (Woodnook Water, with ancient woodland and veteran oaks nearby), forms part of the main river network. Volunteer-led approaches for natural colonisation

included protecting areas with natural materials, and the ancient art of 'dead hedging' to protect saplings.

LATF tree planting is also serving to regenerate urban areas in green spaces, many of which were previously derelict or reclaimed. Plans are also in place to plant a full half-hectare ex-construction site, should the land under the rubble be suitable. This round of LATF will provide a fresh layer of enhancement to these pockets of greenery. Community engagement formed a big part of this project, and even after planting, visitors to all planting sites can access information about the project through QR codes provided on wooden posts.

Front cover photo: Eddie Maxwell and Elaine Cookson planting trees with LATF

### To find out more about the LATF

please visit [www.gov.uk/guidance/local-authority-treescapes-fund](http://www.gov.uk/guidance/local-authority-treescapes-fund)

# Positives

- Rebooted the East Lancashire Woodlands partnership from early 2000s
- Proved how partnership working can add a lot of value to a project
- Good use of evidence to show the need for a project
- Another great example of the RRT team pulling together, and using our individual skill sets to get something done
- Able to adapt the project to involve schools that, otherwise, could not have taken part
- Reached new schools that we haven't worked with before
  - Many keen to work with us again!

